



TEL-29

Telescopic Aerials



DEMAND BETTER

Hydraulic Levelled Platform
available on all models



Non-Insulated Aluminum
Inner Boom for
increased payload and
less wear and tear
on chassis



Patented Electroguard
provides 42" insulation
gap in fully retracted
position insulated
units only



Infinitely Adjustable Slide Pads

- Working Height: Up to 35'
- Horizontal Reach: Up to 23' 5"
- Platform Capacity: Up to 350 lbs.

Optional Remote Electric
Controls provide greater
visibility for operation of
the unit from the ground



For more information about the TEL-29 or any of the other outstanding VERSALIFT machines,
contact your authorized VERSALIFT Distributor or call 1.800.825.1085.



Tel-29

Telescopic Aerials

GENERAL SPECIFICATIONS

(Based on 40 in. (1.02m) Frame Height)

INSULATED MODELS

	TEL-29-I	TEL-29-EI	TEL-29-IH	TEL-29-EIH
Horizontal Reach	21 ft. 8 in. (6.60 m)	23 ft. 5 in. (7.14 m)	20 ft. 11 in. (6.37 m)	23 ft. 5 in. (7.14 m)
Standard Platform Capacity	300 lbs. (136 kg)	300 lbs. (136 kg)	300 lbs. (136 kg)	300 lbs. (136 kg)
Outer Boom Travel	-8° to +80°	-8° to +80°	-14° to +74°	-14° to +74°
Inner Boom Extension	116 in. (2.95 m)	116 in. (2.95 m)	116 in. (2.95 m)	116 in. (2.95 m)
Insulation Gap	42 in. (1.07 m)	42 in. (1.07 m)	42 in. (1.07 m)	42 in. (1.07 m)

With Standard Pedestal

Height to Bottom of Platform	29 ft. 11 in. (9.12 m)	30 ft. 7 in. (9.32 m)	29 ft 6 in. (9.0 m)	29 ft. 1 in. (8.86 m)
Working Height	34 ft. 11 in. (10.64 m)	35 ft. 7 in. (10.85 m)	34 ft 6 in. (10.52 m)	34 ft. 1 in. (10.4 m)
Stowed Travel Height	9 ft. 9 in. (2.97 m)	9 ft. 9 in. (2.97 m)	10 ft. 6 in. (3.20 m)	10 ft. 6 in. (3.2 m)
Weight of Lift w/Mounting Hardware	1,510 lbs. (686 kg)	1,530 lbs. (695 kg)	1,560 lbs. (710 kg)	1,580 lbs. (715 kg)

Hydraulic System

Operating Pressure	2000 PSI (141 kg/cm ²)	2000 PSI (141 kg/cm ²)	2250 PSI (158 kg/cm ²)	2250 PSI (158 kg/cm ²)
Flow Rate	2 GPM (8 lpm)	2 GPM (8 lpm)	3 GPM (12 lpm)	3 GPM (12 lpm)
Filtration	10 micron return	10 micron return	10 micron return	10 micron return
	100 mesh suction	100 mesh suction	100 mesh suction	100 mesh suction
System Type	Open Center	Open Center	Open Center	Open Center

NON-INSULATED MODELS

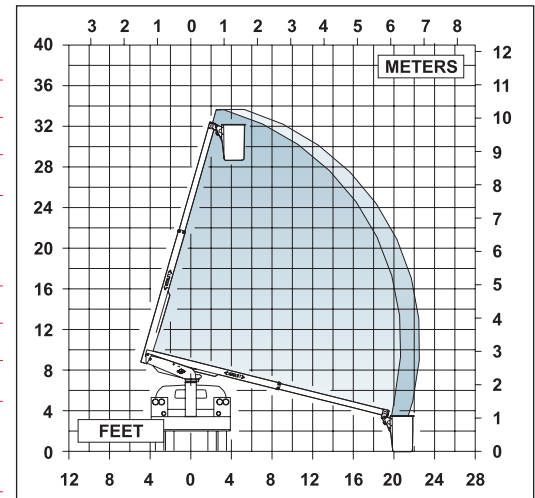
	TEL-29-N	TEL-29-NE
Horizontal Reach	20 ft. 8 in. (6.30 m)	22 ft. 7 in. (6.88 m)
Platform Capacity	350 lbs. (159 kg)	350 lbs. (159 kg)
Outer Boom Travel	-14° to +74°	-14° to +74°
Inner Boom Extension	116 in. (2.95 m)	116 in. (2.95 m)

With Standard Pedestal

Height to Bottom of Platform	28 ft. 11 in. (8.81 m)	29 ft. 9 in. (9.07 m)
Working Height	33 ft. 11 in. (10.34 m)	34 ft. 9 in. (10.6 m)
Stowed Travel Height	9 ft. 9 in. (2.97 m)	9 ft. 9 in. (2.97 m)
Weight of Lift w/Mounting Hardware	1,440 lbs. (653 kg)	1,460 lbs. (662 kg)

Hydraulic System

Operating Pressure	2000 PSI (141 kg/cm ²)	2000 PSI (141 kg/cm ²)
Flow Rate	2 GPM (8 lpm)	2 GPM (8 lpm)
Filtration	10 micron return	10 micron return
	100 mesh suction	100 mesh suction
System Type	Open Center	Open Center



OPTIONS

- Continuous Rotation
- Emergency Lowering
- Torsion Bar
- Extra Control Circuit from the Platform
- Two-Speed Manual Throttle-Control
- Platform Variations
- Taller Pedestal
- Hydraulic Pump Power Selections
- Capacity Variations
- Bridgemoat

NOTE:

1. Specifications may vary without prior notification.
2. Required GVWR can vary significantly with chassis, lift mounting location, service body, accessories, and desired payload.

TIME
MANUFACTURING COMPANY
P.O. Box 20368
Waco, TX 76702-0368
254.399.2100
Fax: 254.399.2651
1.800.825.1085
www.timemfg.com

